



Maple Crest Campus

Newsletter

January 2025



Donut Day

Maple Crest Campus is excited to announce we will be doing the Valentine's Day donut project once again this year! Be on the look out for more details to come! We partner with Hurts Donuts and deliver to lots of local establishments making Valentine's easy. <3



New Job

Maple Crest Campus nursing home is looking to hire, CNAs and nurses in our nursing home. If you, or someone you know, would like to apply-stop in today or apply online at www.maplecrestmanor.com



Closet Reset

With the holidays come new clothes for many of our residents and tenants. If you could help your loved ones clean out their closets and take home what no longer fits or is worn out we would appreciate it.

Thank You!

This holiday season Maple Crest Campus received so many thoughtful gifts and kind gestures. We want to make sure that each of you who took time out of your holiday season to remember us knows how thankful we are.

Special Events

1/15 Hearing Clinic



Valentine's

Valentine's Day is the perfect excuse to send your loved one a note or fun surprise.

A Snapshot into the last month at Maple Crest Campus



Family Christmas



Lights tour



Who knew horses could come inside!



Employee Christmas Party



Jesup School donates to our campus



Staff had a blast at the party



The residents made beautiful angels



Hello Santa



Hidden Talents

With the holidays over and spring being a ways away we are always looking for fun ideas for our campus. If you have a fun talent, craft, or hobby you would like to share with us we would love to hear from you.

Can you play piano and would like to give us a show? We would love it. Do you know a ton about National Parks and would like to teach us? We would love it.

Contact Mary Davis or Angelique Lueder to set up a time to come and entertain us.



Old Mill Floral

West Union--563-422-5729



Welcome

We would like to welcome Gordon Davis to our nursing home.

Best of luck to Mary Adkins, Cindy Barness, and Evelyn King who left our facility.

We would like to welcome Gracie Bloes, universal worker, Sharai Gonzalez, dietary, Bert Medberry, CNA, and Faith Walters, CNA.

Not Feeling Well?

It's that time of year, cold and flu season. If you are not feeling well, we ask that you please stay home until you are feeling well. You are welcome to call or mail a letter to your loved ones if you are under the weather.



Staff:

1/3 Paige Mihm

1/6 Betty Hildebrand

1/14 Chelsey Hutchinson

1/24 Heather Collins



We Can Help

If you or a loved one is looking for assisted living, memory care, long term care or skilled rehab we are here to help. Call today and see how we can help you. 563.425.3336



This Month's Anniversaries

Neveah Briggs 1 year

Allison Butikofer 3 years

Maeley Nefzger 1 year

Wanda Stepan 4 years

This Month's Birthdays

Residents & Tenants:

1/3 Gerald Kremer

1/5 Joyce Harnisch

The Maple Crest Correspondence-December 2025: A Campus Christmas

Another season has come. Carolers have filled our hallways, presents have stacked up in offices, staff have enjoyed each other's company at the annual party, all while Christmas music has filled the halls with tunes that trigger fond memories. Christmas at Maple Crest is always one of the best times of the year. The telling of old traditions, the sharing of favorite dishes, the laughter with new friends. Nothing lights up the place more than when family walks in with a bag full of goodies and the flash of genuine love that comes across the face of the one they are coming to see.

During the holiday season, there is no truer statement than that of Maple Crest's moto: A small town atmosphere where neighbors care for neighbors. The residents here are so loved by everyone in their communities. Cookies, fudges, homemade blankets, quilts, and poinsettias are dropped off for all to enjoy as everyone shares "Hello"s and "remember when"s. Rarely does someone enter our doors that isn't greeted in unison by several people asking how the family is and passing along their greetings as they head out the door.

While holidays here at Maple Crest have special meaning, we realize that you all at home are sharing in some of your fondest moments as well. If you are home visiting your older loved ones, we encourage you to bring them up to visit with friends that may be residing here. Whether it be in our assisted living, memory care assisted living, or nursing home, we can promise you there is no better feeling than seeing the bond between lifelong friends during the holidays.

As we are wishing you and yours the happiest of holidays we encourage you to share your photos from your visit over the holidays in the comments! We'd love to share the smiles on our page.

Have a safe, happy and healthy holiday and new year!



**THE MAPLE CREST CORRESPONDENCE-DECEMBER 2024
A CAMPUS CHRISTMAS**

Sunday

Monday

Tuesday

Wednesday

Thursday

Friday

Saturday

January 2025

Oh Baby, It's cold outside

| | | | | | | |
|---|--|--|---|---|---|--|
| | <p>1 Make those New Year's Resolutions Football Day on Channel 9 (ESPN) <small>New Year's Day</small></p> | <p>2 AM - Therapy Noon - Honor our Flag Noon - Honor our Flag 2pm - BINGO</p> | <p>3 Happy Birthday Gerald K Noon - Honor our Flag and Trivia 2pm - Church service with Pastor Peck</p> | <p>4 2pm - Bingo with Fayette 4-H</p> | | |
| <p>5 Happy 100th Birthday Joyce H</p> | <p>6 10:30am - Coffee & Conversation Noon - Trivia 2pm - Stories with Annette</p> | <p>7 10:30am - Christmas Take Down Noon - Honor our Flag 2pm - Christmas Take Down</p> | <p>8 10am - Catholic Communion Noon - Honor our Flag 2pm - Bingo Day</p> | <p>9 AM - Therapy Noon - Honor our Flag 2pm - Wine Social and New Year's Resolution</p> | <p>10 10:30AM - Hymn singing with Me Noon - Honor our Flag and Trivia 2pm - Church service with Pastor Post</p> | <p>11 Morning Therapy Books and Magazines available by Activity Office</p> |
| <p>12 Give Thanks! Jigsaw puzzles available at end of 100 wing</p> | <p>13 8am - Daily Chronicles Noon - Trivia 2pm - Music with Linda and Curt</p> | <p>14 10:30am - Pool Noodle Polo Noon - Honor our Flag 2pm - Nail Care Manicures</p> | <p>15 10am - Catholic Mass with Fr. Davis Noon - Honor our Flag 2pm - Bingo Day</p> | <p>16 AM - Therapy Noon - Honor our Flag 2pm - 500 and UNO 6:30pm - Wheel of Fortune Ch.5</p> | <p>17 Noon - Honor our Flag and Trivia 2pm - Church service with Pastor Hansen</p> | <p>18 Books and Magazines available by Activity Office</p> |
| <p>19 Say the Lord's Prayer Jigsaw puzzles available at end of 100 wing <small>Activity Professionals Week</small></p> | <p>20 10:30am - Coffee and Color Noon - Trivia 2pm - Fun & Games with UIU students!! <small>Martin Luther King Jr. Day</small></p> | <p>21 10:30am - Hokey Pokey Fitness Noon - Honor our Flag 2pm - Penny Pitch 6:30pm - Wheel of Fortune Ch.5</p> | <p>22 10am - Catholic Communion Noon - Honor our Flag 2pm - Bingo Day</p> | <p>23 AM - Therapy Noon - Honor our Flag 2pm - Music with Jerry Anderson</p> | <p>24 Noon - Honor our Flag and Trivia 2pm - Activity Professionals Week Party with Me ☺</p> | <p>25 Books and Magazines available by Activity Office</p> |
| <p>26 Offer a smile to those you meet today Jigsaw puzzles available at end of 100 wing <small>Australia Day (Observed)</small></p> | <p>27 10:30am - Stretching Noon - Trivia 2pm - Horse Races 6:30pm - Wheel of Fortune Ch.5</p> | <p>28 10:30am - Pool Noodle Polo Noon - Trivia 1:15pm - Resident Council 2pm - Music with Dave Poggenklass</p> | <p>29 10am - Catholic Communion Noon - Honor our Flag 2pm - Bingo Day <small>Chinese New Year (Year of the Snake)</small></p> | <p>30 AM - Therapy Noon - Honor our Flag 2pm - Crafting</p> | <p>31 Noon - Honor our Flag and Trivia 2pm - Church service with Pastor Smith</p> | <p>Activities are subject to change if needed</p> |

Happy
New Year

January

Assisted Living Calendar

2025



| Sunday | Monday | Tuesday | Wednesday | Thursday | Friday | Saturday |
|--|---|---|--|---|---|--|
| | | | 1 9:30 Coffee and conversation 2:00 Cash BINGO | 2 9:30 Chair Yoga 2:00 Coffee and conversation | 3 9:30 Chair Yoga 2:00 Church with Pastor Peck | 4 9:30 Coffee and reminisce 2:00 Cash BINGO |
| 5 9:00 Lutheran Church on Television 2:00 Baking with Sandy | 6 9:30 Chair Yoga Casey's Pizza for Lunch from Bartz family | 7 9:30 Coffee and Reminisce 2:00 Word Search and coffee | 8 9:30 Coffee and conversation 2:00 Cash BINGO | 9 9:30 Chair Yoga 2:00 Trivia | 10 9:30 Chair Yoga 1:30 Church w/ Pastor Post | 11 9:30 Coffee and reminisce 2:00 Cash BINGO |
| 12 9:00 Lutheran Church on Television 2:00 Coffee and conversation | 13 9:30 Chair Yoga 2:00 Library Talks w/ Annette | 14 9:30 Coffee and reminisce 2:00 Beer and Nuts | 15 Hearing Aide Clinic 10:15 Mass @ NH 1030-12 BINGO Store Tenant Meeting at Lunch 2:00 Cash BINGO | 16 9:30 Chair Yoga 2:00 Nail Care | 17 9:30 Chair Yoga 2:00 Church with Pastor Hansen | 18 9:30 Coffee and reminisce 2:00 Cash BINGO |
| 19 9:00 Lutheran Church on Television 2:00 Coffee and conversation | 20 9:30 Chair Yoga 2:00 Monthly Birthday Party | 21 9:30 Coffee and conversation 2:00 Wine and Cheese | 22 9:30 Coffee and conversation 2:00 Cash BINGO | 23 9:30 Coffee and Reminisce 2:00 Music with Jerry Anderson @NH | 24 9:30 Chair Yoga 2:00 Pie Day | 25 9:30 Coffee and reminisce 2:00 Cash BINGO |
| 26 9:00 Lutheran Church on Television 2:00 Baking with Sandy | 27 9:30 Chair Yoga 2:00 Popcorn and a movie | 28 9:30 Coffee and conversation 2:00 Dave Pogenklass @ NH | 29 9:30 Coffee and conversation 2:00 Cash BINGO | 30 9:30 Chair Yoga 2:00 Nail Care | 31 9:30 Chair Yoga 2:00 Church with Pastor Smith | |

Birthday's:
1.6 Betty Hildebrand



January

Maple Memory Lane

2025

| Sunday | Monday | Tuesday | Wednesday | Thursday | Friday | Saturday |
|--|--|---|--|---|---|--|
| | | | 1 10:00 Walking Club 4:00 Coffee and conversation | 2 10:00 Walking Club 3:00 Watercoloring | 3 10:00 Walking Club 2:00 Church with Pastor Peck @ NH | 4 10:00 Walking Club 4:00 Hot Coco and reminisce |
| 5 10:00 Coffee and conversation 2:00 | 6 10:00 Walking Club 2:00 BINGO | 7 10:00 Coffee and conversation 3:00 Movie and popcorn | 8 10:00 Coffee and conversation 4:00 Fireside Reminisce | 9 10:00 Walking Club 2:00 BINGO | 10 10:00 Walking Club 2:00 Church w/ Pastor Post @ NH | 11 10:00 Walking Club 3:00 Puzzles |
| 12 10:00 Coffee and conversation 4:00 Adult Coloring | 13 10:00 Walking Club 2:00 BINGO | 14 10:00 Coffee and conversation 3:00 Snacks and conversation | 15 Hearing Aide Clinic 10:00 Mass @NH 4:00 Fireside Reminisce | 16 10:00 Coffee and conversation 3:00 Nail Care | 17 10:00 Walking Club 2:00 Church with Pastor Hansen | 18 10:00 Walking Club 4:00 Seated Balloon Volleyball |
| 19 10:00 Coffee and conversation 4:00 Adult Coloring | 20 10:00 Coffee and conversation 2:00 Monthly Birthday Party | 21 10:00 Walking Club 3:00 Snacks and conversation | 22 10:00 Coffee and Conversation 2:00 Fireside Reminisce | 23 10:00 Coffee and conversation 2:00 Music with Jerry Anderson @NH | 24 10:00 Walking Club 2:00 Pie Day | 25 10:00 Walking Club 4:00 Movie and popcorn |
| 26 10:00 Coffee and conversation 4:00 Puzzles | 27 10:00 Walking Club 3:00 Nail Care | 28 10:00 Coffee and conversation 1:30 Dave Pogenklass at NH | 29 10:00 Walking Club 2:00 BINGO | 30 10:00 Coffee and conversation 2:00 Movie and Popcorn | 31 10:00 Walking Club 2:00 Church with Pastor Smith @NH | |

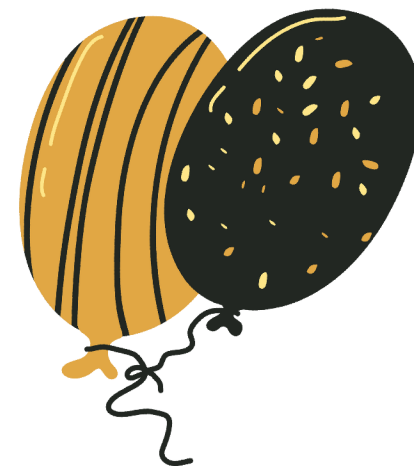
Birthday's:

- 1.6 Betty Hildebrand
- 1.14. Chelsey Hutchinson




Maple Crest
MANOR | THE MAPLES & MAPLE MEMORY LANE
100 Bolger Drive
Fayette, Iowa 52142
Phone: 563.425.3336
Fax: 563.425.3512

HAPPY
New Year



Making Life Easier:

Third Wednesday of every month FREE On-Site hearing clinic:

Call Maple Crest for an appointment. 563-425-3336

Monday-Friday Meals on Wheels:

We deliver meals to your door! Please contact Maple Crest if you would like more information or to get on our delivery route. Must reside within Fayette city limits.



Maple Crest Campus

Follow Us



maplecrestmanor.com